



| Vigas |            |               |            |
|-------|------------|---------------|------------|
| Nome  | Seção (cm) | Elevação (cm) | Nível (cm) |
| V1    | 14x30      | 0             | 386        |
| V2    | 14x40      | 0             | 386        |
| V3    | 14x60      | 0             | 386        |
| V4    | 18x40      | 0             | 386        |
| V5    | 14x30      | 0             | 386        |
| V6    | 14x30      | 0             | 386        |
| V7    | 14x30      | 17            | 403        |
| V8    | 14x30      | 17            | 403        |
| V9    | 14x30      | 0             | 386        |
| V10   | 14x40      | 0             | 386        |
| V11   | 14x40      | 0             | 386        |
| V12   | 14x30      | 0             | 386        |
| V13   | 14x50      | 0             | 386        |
| V14   | 24x50      | 0             | 386        |
| V15   | 14x30      | 0             | 386        |
| V16   | 18x50      | 37            | 423        |
| V17   | 18x50      | 0             | 386        |
| V18   | 14x30      | 15            | 401        |
| V19   | 24x50      | 0             | 386        |
| V20   | 14x50      | 35            | 421        |
| V21   | 18x40      | 0             | 386        |
| V22   | 14x50      | 35            | 421        |
| V23   | 18x40      | 0             | 386        |
| V24   | 14x30      | 0             | 386        |
| V25   | 18x30      | -144          | 242        |
| V26   | 18x30      | -234          | 152        |
| V27   | 18x30      | -234          | 152        |

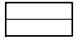
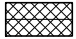
| Pilares |            |               |            |
|---------|------------|---------------|------------|
| Nome    | Seção (cm) | Elevação (cm) | Nível (cm) |
| P9      | 24x55      | 0             | 386        |
| P10     | 24x55      | 0             | 386        |
| P11     | 18x55      | 0             | 386        |
| P12     | 18x35      | 0             | 386        |
| P13     | 24x55      | 0             | 386        |
| P14     | 18x55      | 0             | 386        |
| P15     | 18x35      | 0             | 386        |
| P16     | 24x50      | 0             | 386        |
| P17     | 14x35      | 0             | 386        |
| P18     | 24x55      | 0             | 386        |
| P19     | 24x50      | 0             | 386        |
| P20     | 14x40      | 0             | 386        |
| P21     | 24x55      | 0             | 386        |
| P22     | 18x55      | 0             | 386        |
| P23     | 18x35      | 0             | 386        |
| P24     | 18x35      | 0             | 386        |
| P25     | 18x35      | 0             | 386        |
| P26     | 18x35      | 0             | 386        |
| P27     | 24x35      | 0             | 386        |
| P28     | 24x55      | 0             | 386        |
| P29     | 18x55      | 0             | 386        |
| P30     | 18x50      | 0             | 386        |
| P31     | 24x35      | 0             | 386        |
| P32     | 24x35      | 0             | 386        |
| P33     | 18x30      | 0             | 386        |

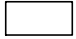
| Lajes |              |             |               |            |                       |                     |           |            |
|-------|--------------|-------------|---------------|------------|-----------------------|---------------------|-----------|------------|
| Dados |              |             |               |            |                       | Sobrecarga (kgf/m²) |           |            |
| Nome  | Tipo         | Altura (cm) | Elevação (cm) | Nível (cm) | Peso próprio (kgf/m²) | Adicional           | Acidental | Localizada |
| L1    | Pré-moldada  | 13          | 0             | 386        | 283                   | 182                 | 250       | -          |
| L2    | Pré-moldada  | 13          | 0             | 386        | 283                   | 182                 | 250       | -          |
| L3    | Pré-moldada  | 13          | 0             | 386        | 283                   | 182                 | 250       | -          |
| L4    | Pré-moldada  | 13          | 0             | 386        | 283                   | 154                 | 150       | sim        |
| L5    | Treliçada 1D | 13          | 0             | 386        | 283                   | 154                 | 150       | sim        |
| L6    | Treliçada 1D | 13          | 0             | 386        | 283                   | 154                 | 150       | sim        |
| L7    | Treliçada 1D | 13          | 0             | 386        | 293                   | 154                 | 150       | sim        |
| L8    | Pré-moldada  | 13          | 0             | 386        | 283                   | 182                 | 150       | -          |
| L9    | Pré-moldada  | 13          | 0             | 386        | 283                   | 182                 | 150       | -          |
| L10   | Pré-moldada  | 13          | 0             | 386        | 283                   | 154                 | 150       | -          |
| L11   | Pré-moldada  | 13          | 0             | 386        | 283                   | 182                 | 150       | -          |
| L12   | Pré-moldada  | 13          | 0             | 386        | 283                   | 182                 | 150       | -          |
| L13   | Pré-moldada  | 13          | 0             | 386        | 283                   | 182                 | 150       | -          |
| L14   | Pré-moldada  | 13          | 0             | 386        | 283                   | 182                 | 150       | sim        |
| L15   | Pré-moldada  | 13          | 0             | 386        | 283                   | 182                 | 150       | sim        |
| L16   | Treliçada 1D | 13          | 0             | 386        | 283                   | 154                 | 150       | sim        |
| L17   | Treliçada 1D | 13          | 0             | 386        | 283                   | 154                 | 150       | sim        |
| L18   | Pré-moldada  | 13          | 0             | 386        | 283                   | 154                 | 150       | -          |
| L19   | Pré-moldada  | 13          | 0             | 386        | 283                   | 154                 | 150       | -          |
| L20   | Maciça       | 13          | 0             | 386        | 325                   | 155                 | 10        | -          |
| L21   | Maciça       | 13          | 0             | 386        | 325                   | 155                 | 10        | -          |
| LE1   | Maciça       | 15          | -144          | 242        | 605                   | 171                 | 250       | -          |
| LE2   | Maciça       | 15          | -144          | 242        | 375                   | 154                 | 250       | -          |
| LE3   | Maciça       | 15          | 0             | 386        | 692                   | 171                 | 250       | -          |
| LE4   | Maciça       | 15          | -234          | 152        | 743                   | 171                 | 250       | -          |
| LE5   | Maciça       | 15          | -234          | 152        | 375                   | 154                 | 250       | -          |
| LE6   | Maciça       | 15          | 0             | 386        | 603                   | 171                 | 250       | -          |
| LE7   | Maciça       | 15          | 0             | 386        | 375                   | 154                 | 250       | -          |
| LE8   | Maciça       | 15          | -234          | 152        | 743                   | 171                 | 250       | -          |
| LE9   | Maciça       | 15          | -234          | 152        | 375                   | 154                 | 250       | -          |
| LE10  | Maciça       | 15          | 0             | 386        | 603                   | 171                 | 250       | -          |
| LE11  | Maciça       | 15          | 0             | 386        | 375                   | 154                 | 250       | -          |

| Características dos materiais |               |
|-------------------------------|---------------|
| fck (kgf/cm²)                 | Ecs (kgf/cm²) |
| 250                           | 241500        |

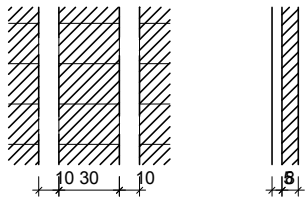
| Blocos de enchimento |                 |          |               |    |    |            |
|----------------------|-----------------|----------|---------------|----|----|------------|
| Detalhe              | Tipo            | Nome     | Dimensões(cm) |    |    | Quantidade |
|                      |                 |          | hb            | bx | by |            |
| 1/2/3/4              | Lajota cerâmica | B8/30/20 | 8             | 30 | 20 | 1685       |

| Legenda dos pilares                                                               |                 |
|-----------------------------------------------------------------------------------|-----------------|
|  | Pilar que morre |
|  | Pilar que passa |

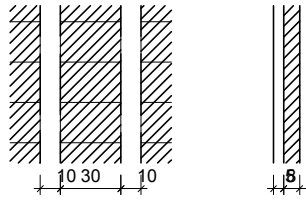
| Legenda das vigas e paredes                                                       |                         |
|-----------------------------------------------------------------------------------|-------------------------|
|  | Viga                    |
|  | Viga chata ou invertida |

| Legenda das lajes                                                                 |      |
|-----------------------------------------------------------------------------------|------|
|  | Laje |

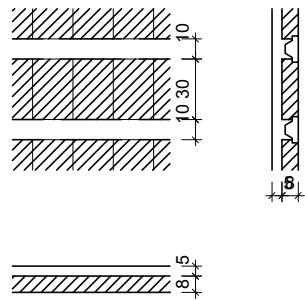
**Detalhe 1 (esc. 1:30)**



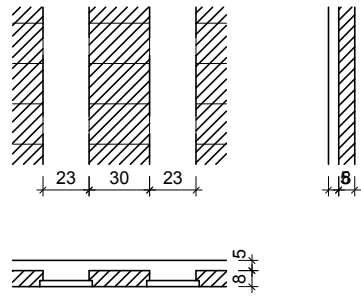
**Detalhe 3 (esc. 1:30)**



**Detalhe 2 (esc. 1:30)**



**Detalhe 4 (esc. 1:30)**



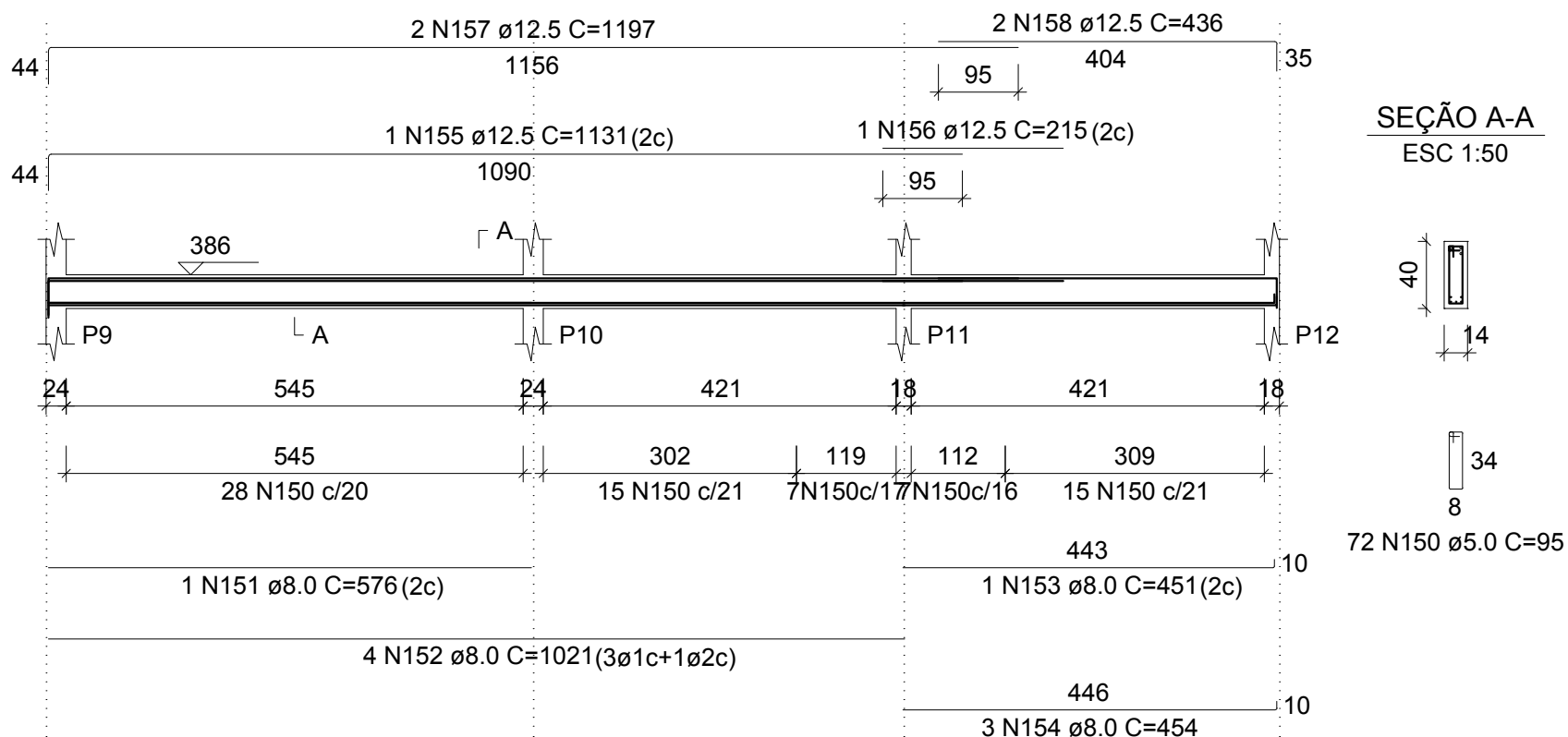
# V1 (14 x 30)

ESC 1:100



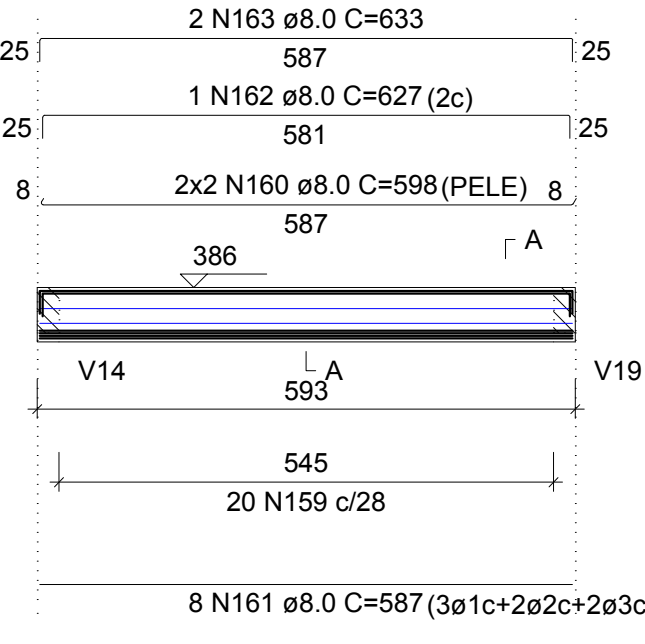
# V2 (14 x 40)

ESC 1:100

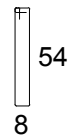
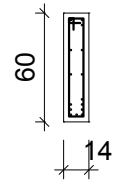


V3 (14 x 60)

ESC 1:100



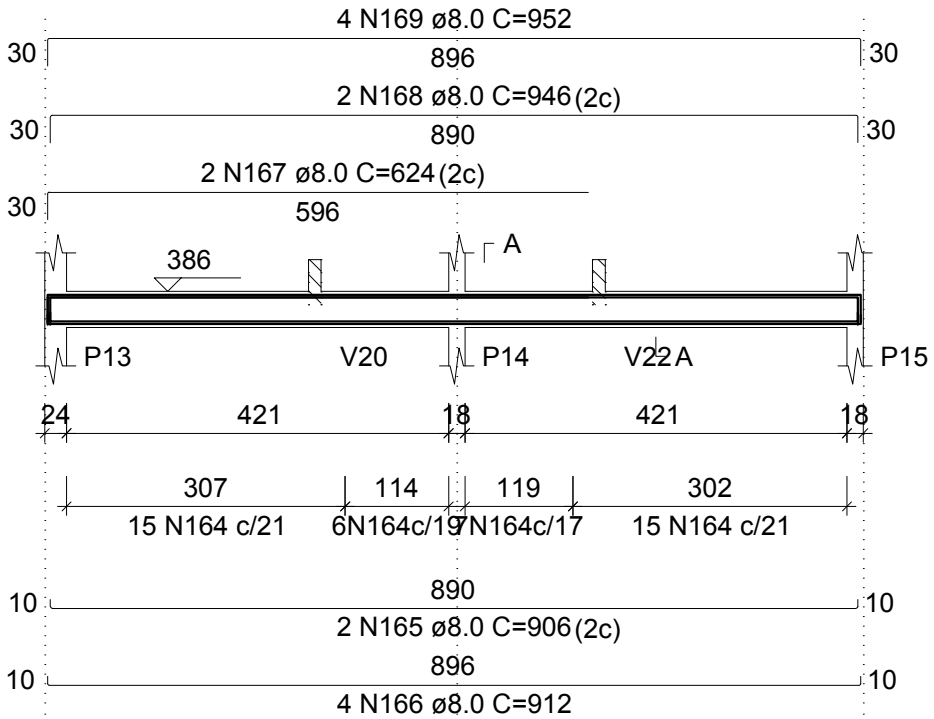
SEÇÃO A-A  
ESC 1:50



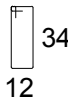
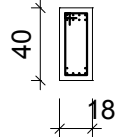
20 N159 ø5.0 C=135

V4 (18 x 40)

ESC 1:100



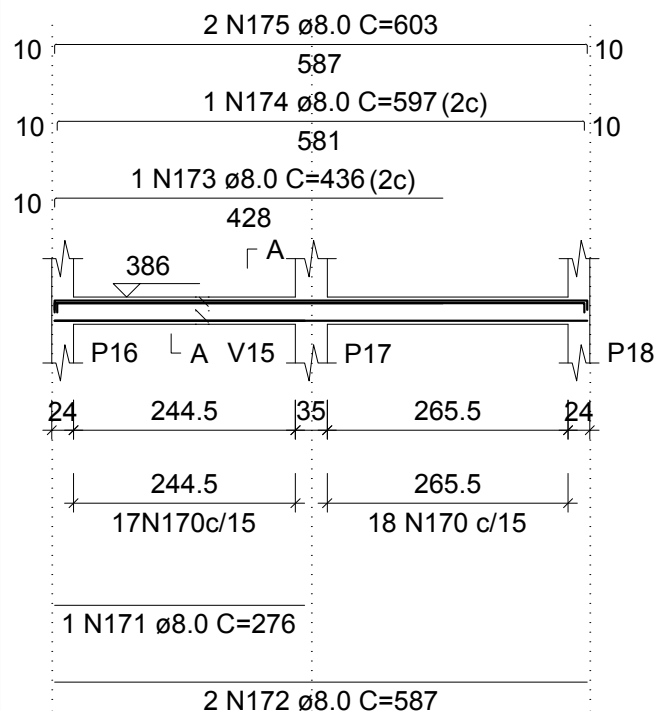
SEÇÃO A-A  
ESC 1:50



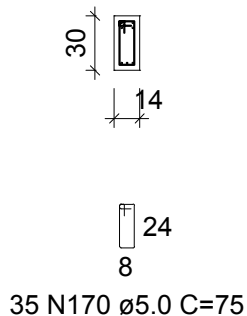
43 N164 ø5.0 C=103

## V5 (14 x 30)

ESC 1:100

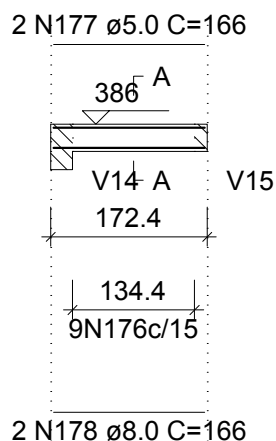


### SEÇÃO A-A ESC 1:50

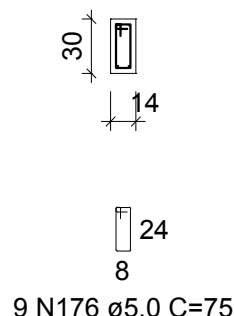


## V6 (14 x 30)

ESC 1:100

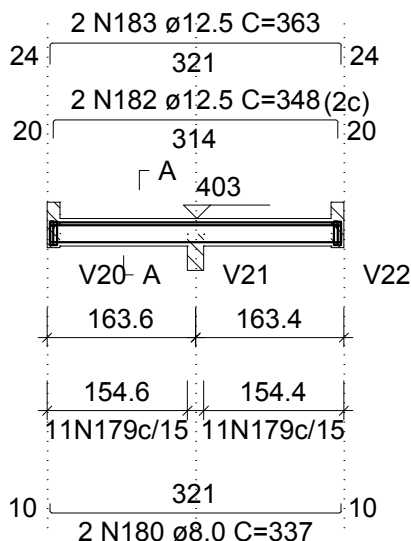


### SEÇÃO A-A ESC 1:50

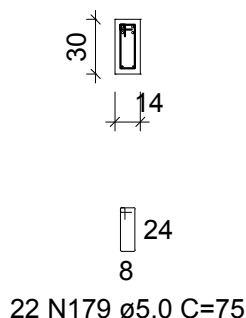


## V7 (14 x 30)

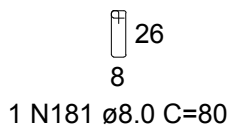
ESC 1:100



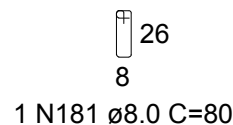
### SEÇÃO A-A ESC 1:50



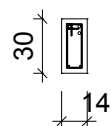
### SUSPENSÃO V20 ESC 1:50



### SUSPENSÃO V22 ESC 1:50



ESC 1:100



24 N184 ø5.0 C=75

SECÃO A-A

ESC 1:50

SUSPENSÃO V20

ESC 1:50



1 N187 ø8.0 C=80

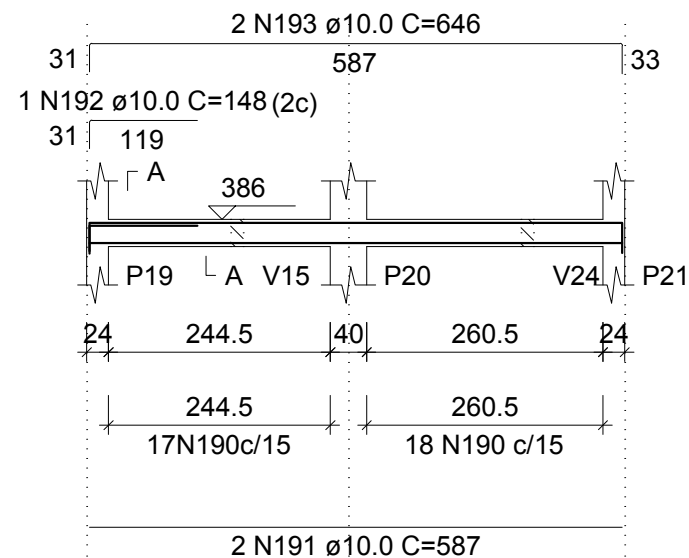
SUSPENSÃO V22

ESC 1:50



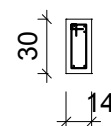
1 N187 ø8.0 C=80

ESC 1:100



SECÃO A-A

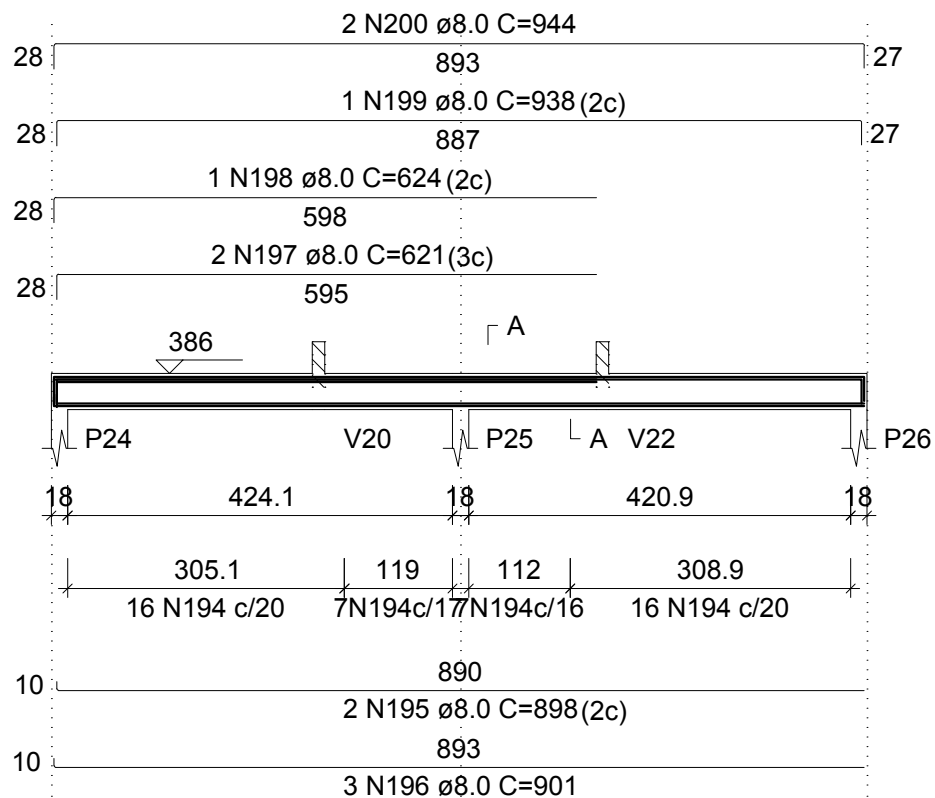
ESC 1:50



35 N190 ø5.0 C=75

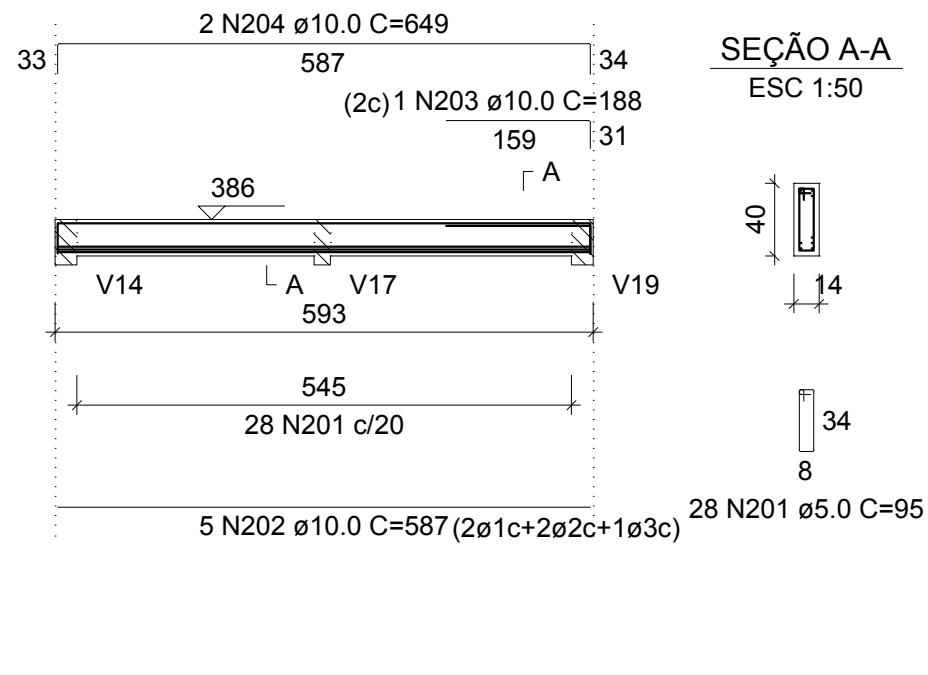
# V10 (14 x 40)

ESC 1:100



# V11 (14 x 40)

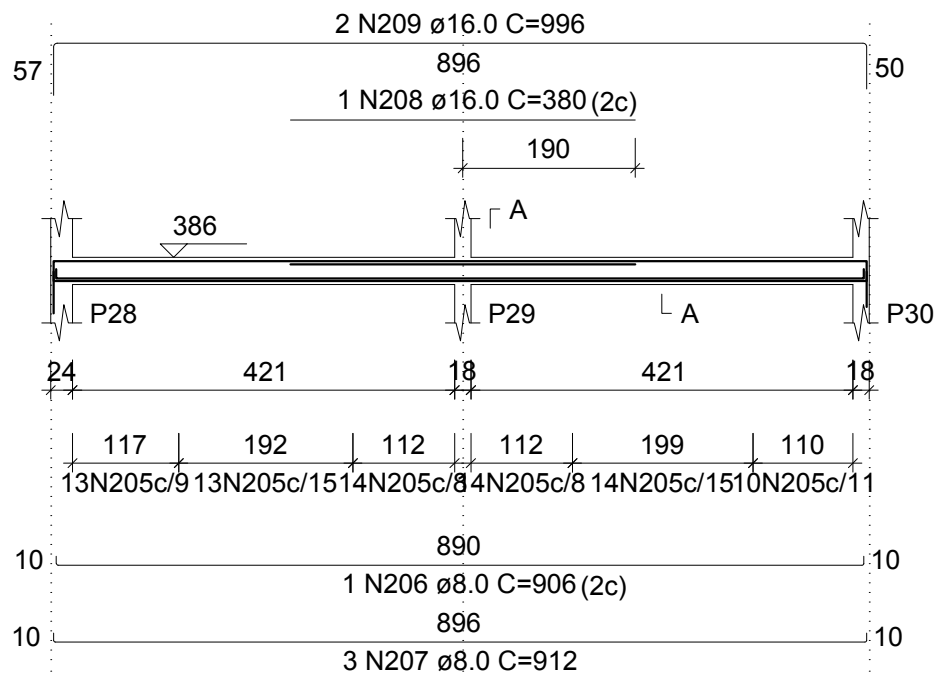
ESC 1:100



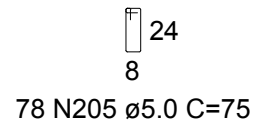
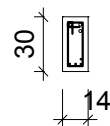


## V12 (14 x 30)

ESC 1:100

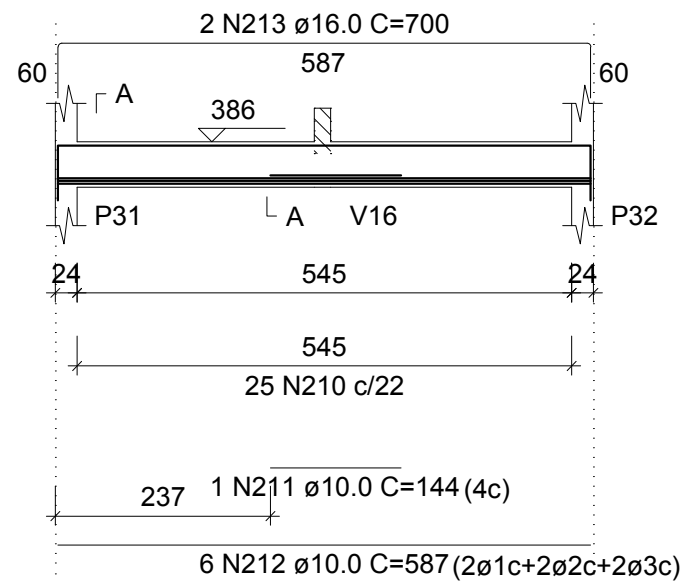


### SEÇÃO A-A ESC 1:50

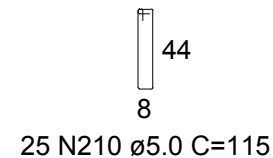
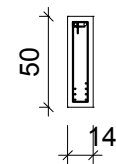


## V13 (14 x 50)

ESC 1:100

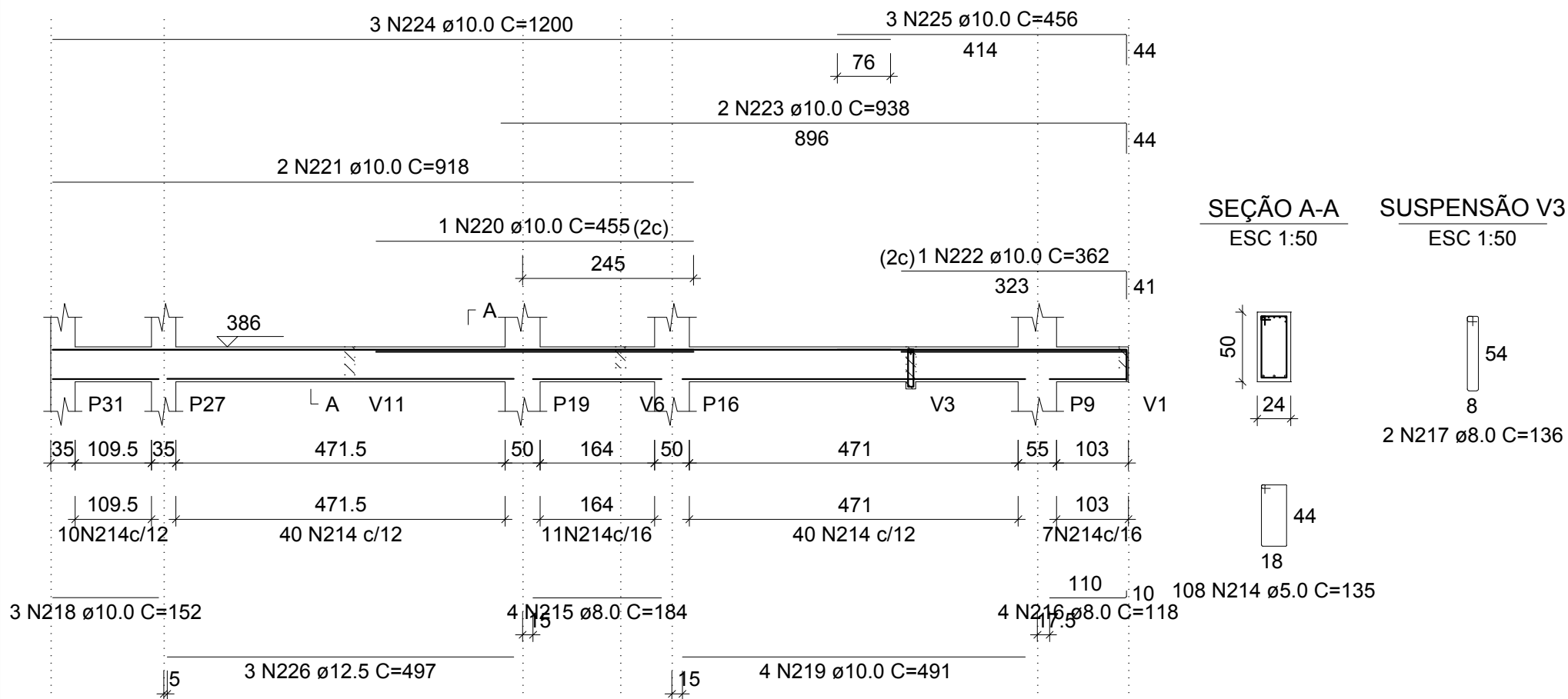


### SEÇÃO A-A ESC 1:50



# V14 (24 x 50)

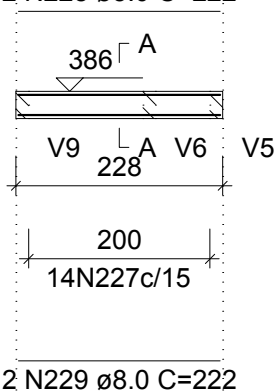
ESC 1:100



## V15 (14 x 30)

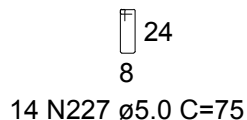
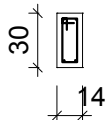
ESC 1:100

2 N228 ø5.0 C=222



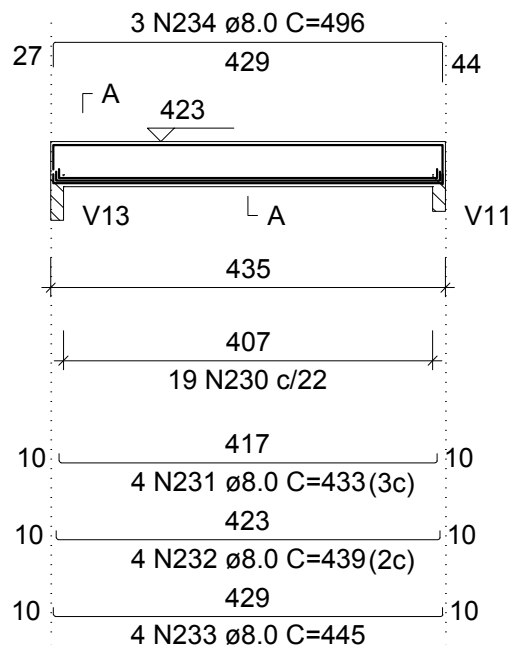
SEÇÃO A-A

ESC 1:50



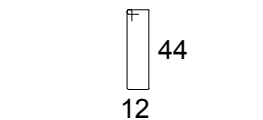
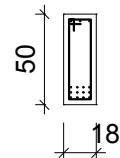
## V16 (18 x 50)

ESC 1:100



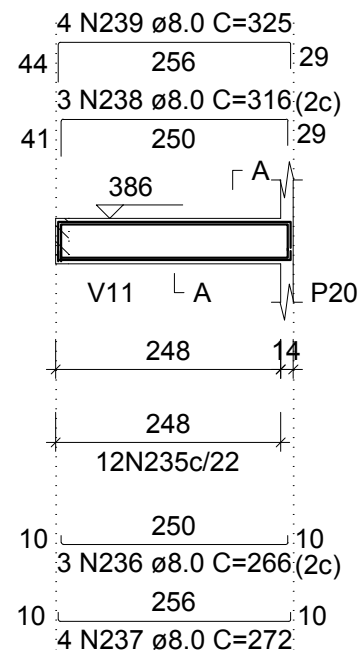
SEÇÃO A-A

ESC 1:50



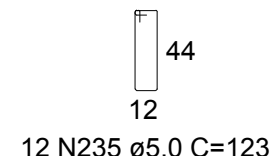
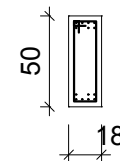
## V17 (18 x 50)

ESC 1:100



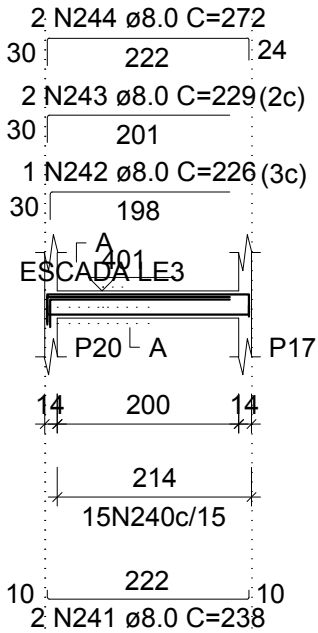
SEÇÃO A-A

ESC 1:50

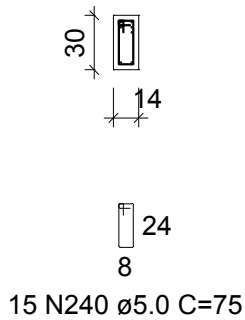


## V18 (14 x 30)

ESC 1:100

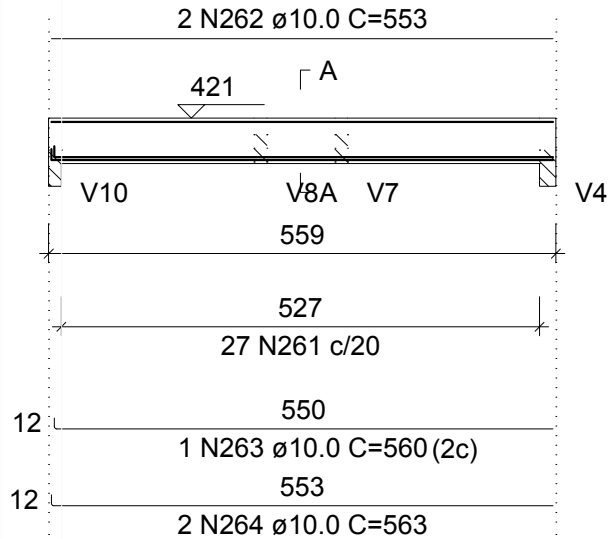


SEÇÃO A-A  
ESC 1:50

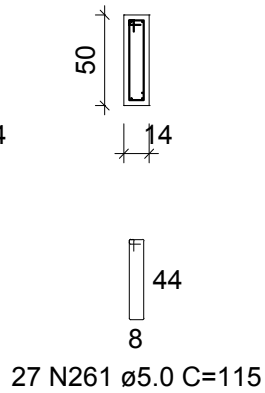


## V20 (14 x 50)

ESC 1:100

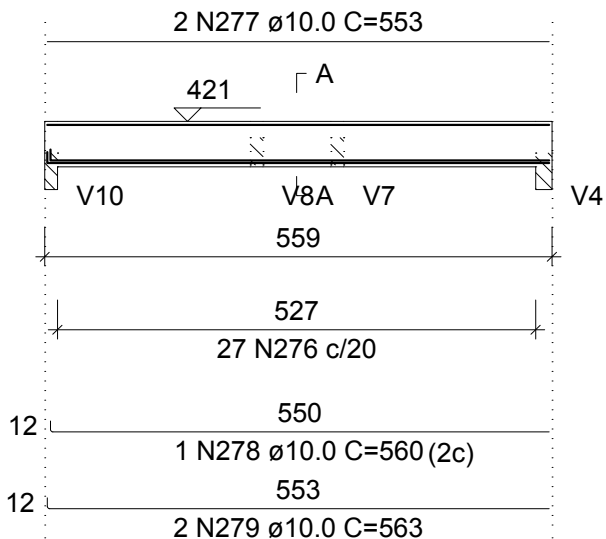


SEÇÃO A-A  
ESC 1:50

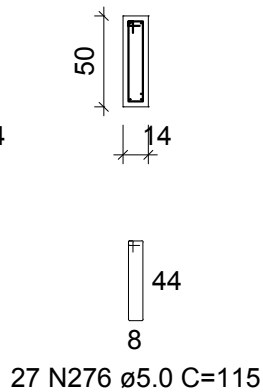


## V22 (14 x 50)

ESC 1:100

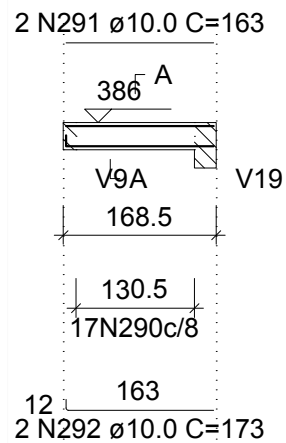


SEÇÃO A-A  
ESC 1:50

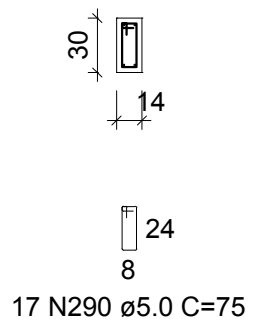


## V24 (14 x 30)

ESC 1:100

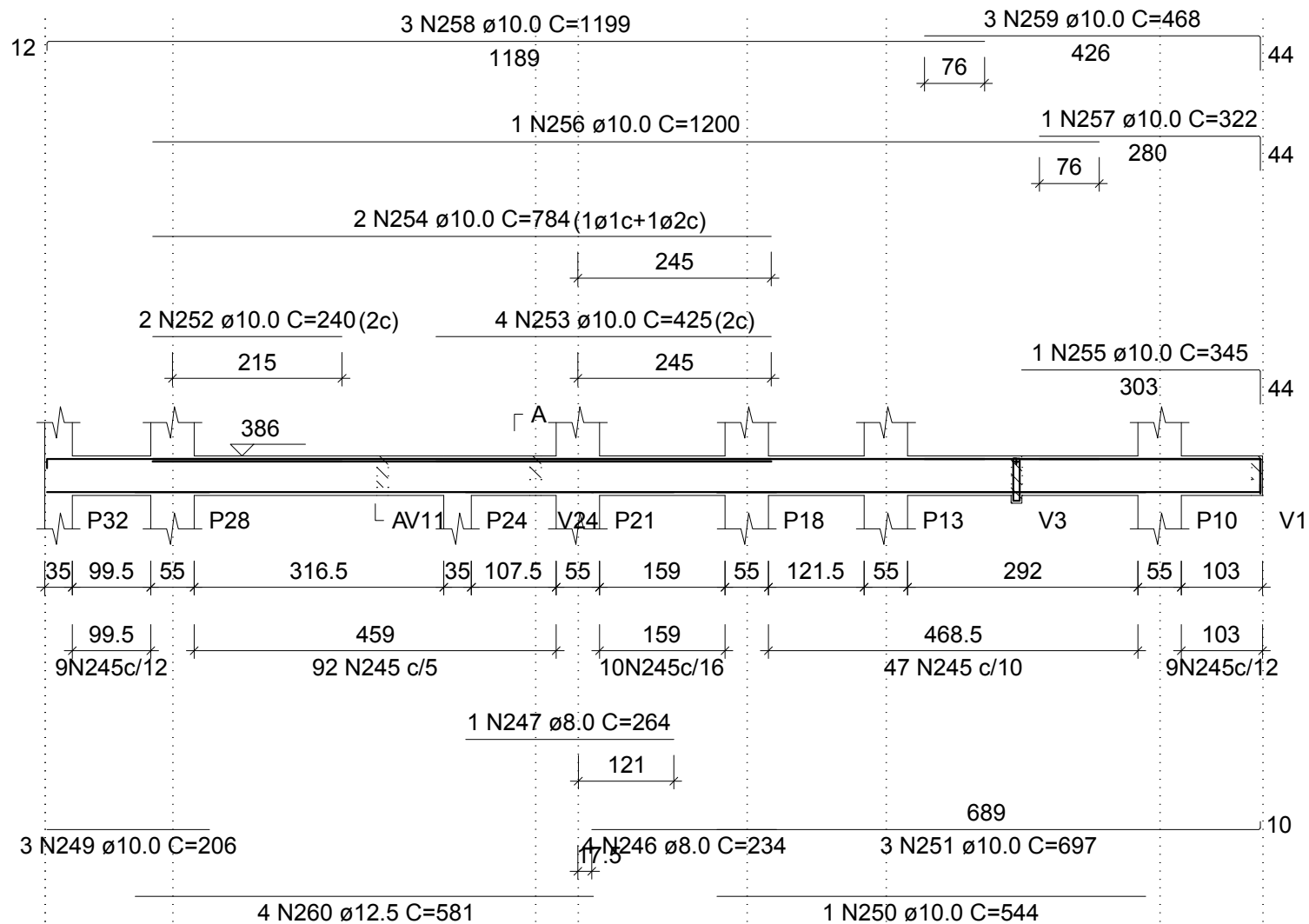


SEÇÃO A-A  
ESC 1:50



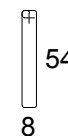
# V19 (24 x 50)

ESC 1:100



SEÇÃO A-A  
ESC 1:50

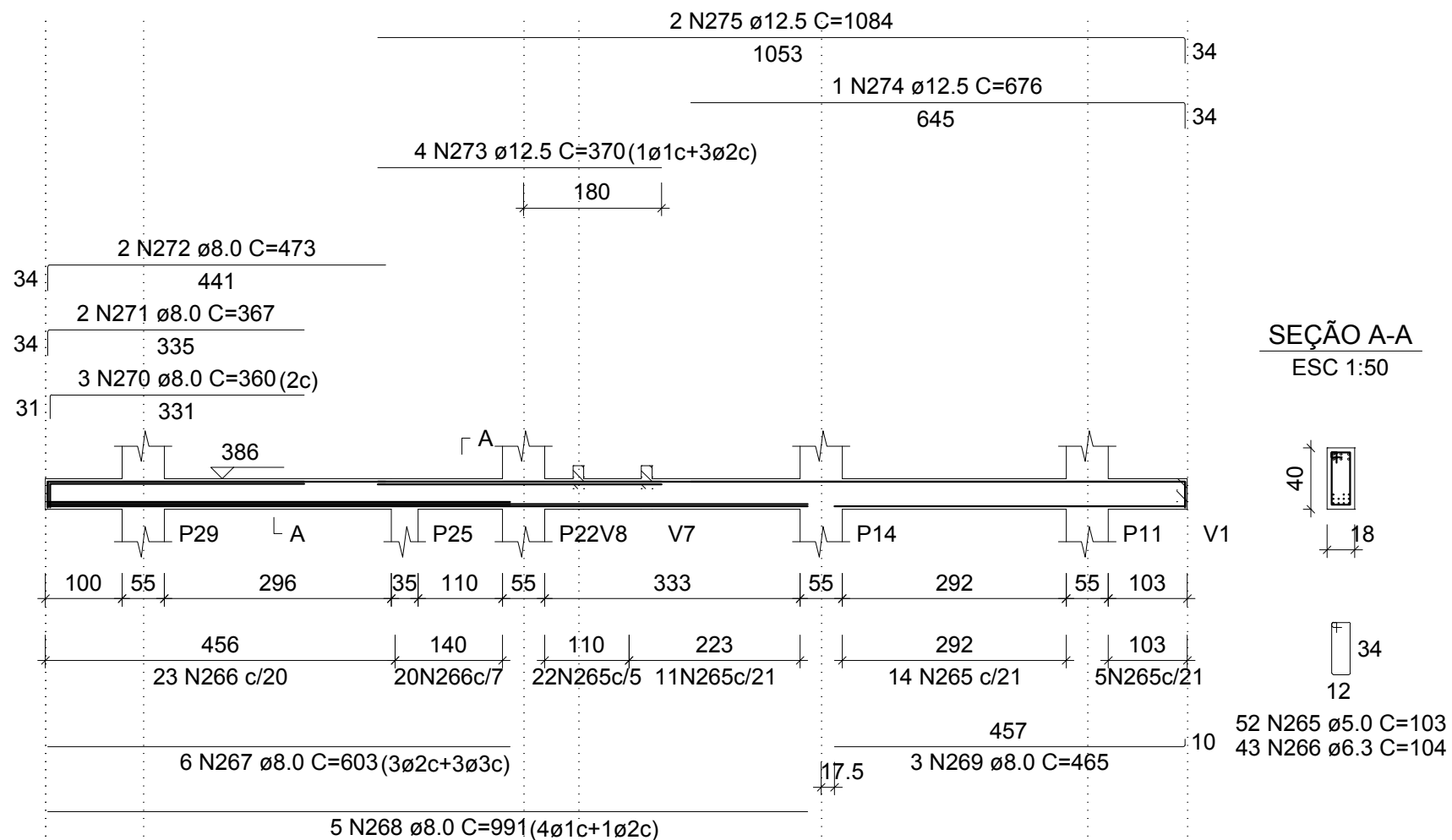
SUSPENSÃO V3  
ESC 1:50



167 N245  $\varnothing$ 5.0 C=135

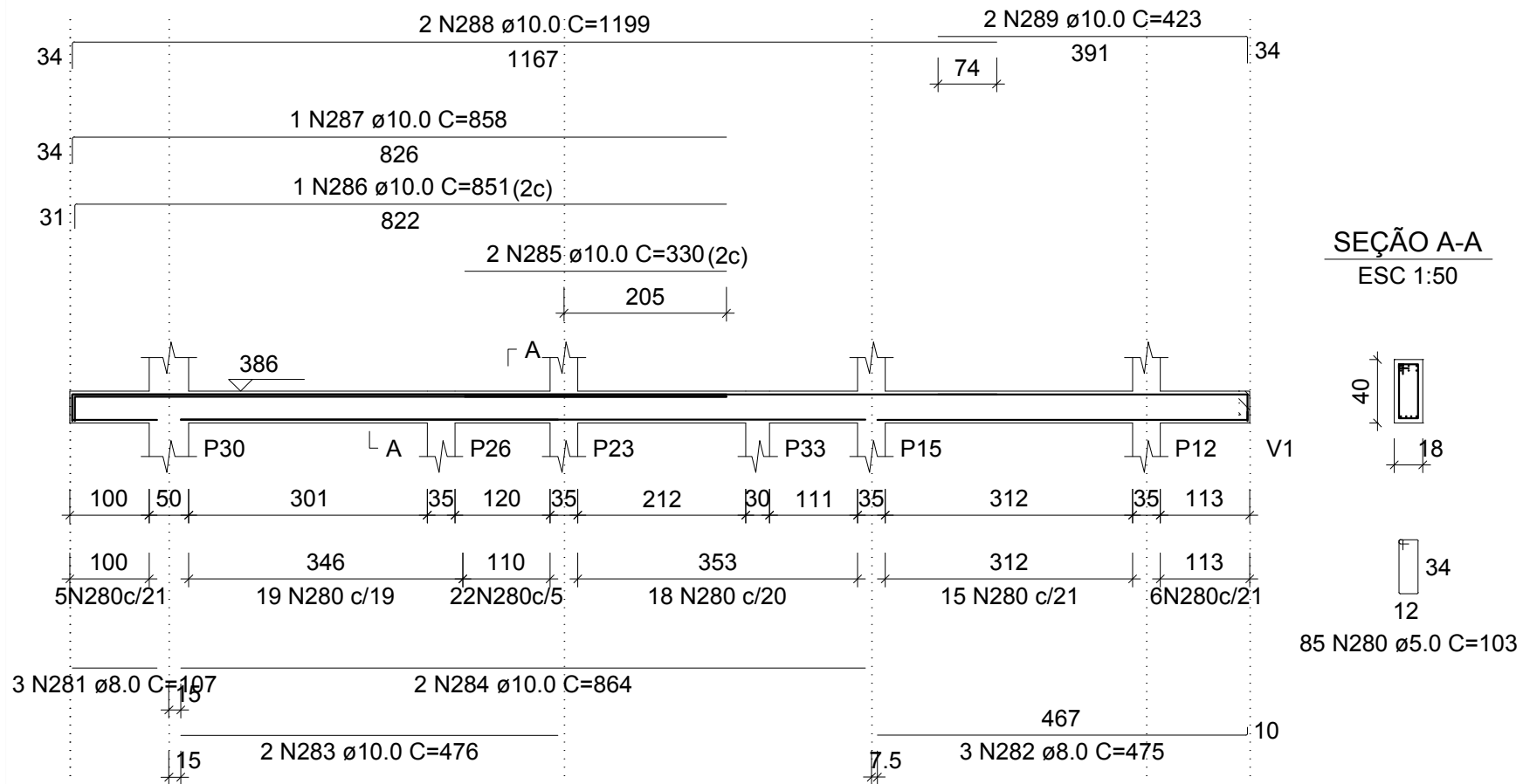
# V21 (18 x 40)

ESC 1:100



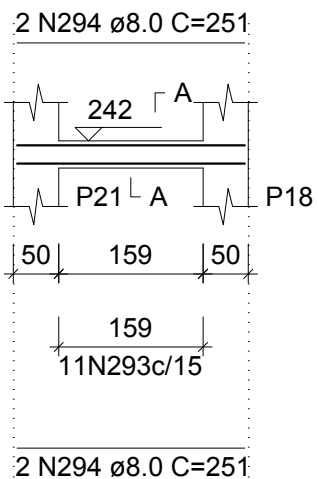
# V23 (18 x 40)

ESC 1:100



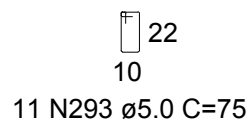
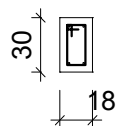
## V25 (18 x 30)

ESC 1:100



### SEÇÃO A-A

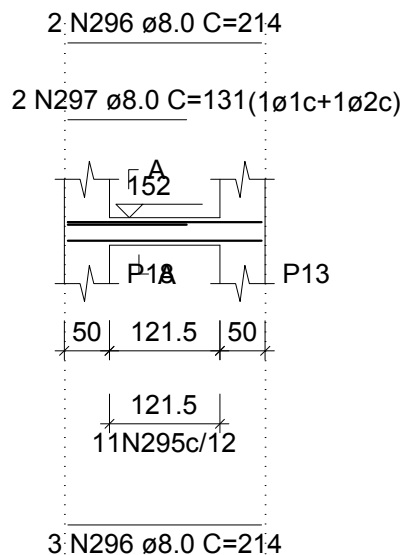
ESC 1:50



11 N293 ø5.0 C=75

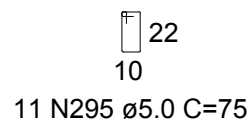
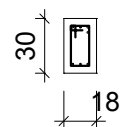
## V26 (18 x 30)

ESC 1:100



### SEÇÃO A-A

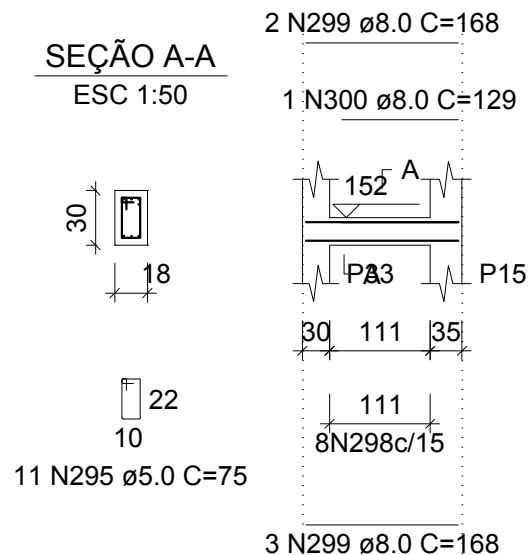
ESC 1:50



11 N295 ø5.0 C=75

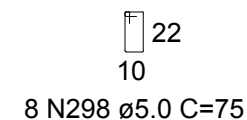
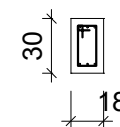
## V27 (18 x 30)

ESC 1:100



### SEÇÃO A-A

ESC 1:50



8 N298 ø5.0 C=75





Planta de vigotas pré-moldadas

escala 1:50